

Shepherds according to Christ's heart

1. A mission
2. The importance of our mission
3. Distortion of a Schoenstatt leader
4. The true image of a Schoenstatt leader

-Shepherds according to Christ's heart-

1. A Mission

- Possibles reactions when elected to be leader-

- What have I to do?
- What demand of me such a mission?
- In what attitude and action may I work to achieve the task in the best way?



-Shepherds according to Christ's heart-

- **A mission**

- I have been elected to be leader because I am able to do the job.
- I am not alone:



As leaders we are only instruments in their wise hands.

-Shepherds according to Christ's heart-

- **A mission**

- I have been elected to be leader because I am able to do the job.

- I am not alone:



As leaders we are only instruments in their wise hands.

-Shepherds according to Christ's heart-



• Our mission

- Our mission is a calling, a “commission” given by Christ, our Father and Founder. They need us.
- They count on us, they trust in us and they want to work through our smallness and limitations.
- The life and growth of the Schoenstatt community is the task of all of us.
- Our mission will be a source of abundant blessings for ourselves because tasks make it possible to grow in learning and sanctity.

-Shepherds according to Christ's heart-

2.- Importance of our mission

The growth and development of the community entrusted to us will essentially depend of our generous effort and readiness to serve the life of others.

**"As the Father sent me,
so am I sending you."**

Jh 20,21.

-Shepherds according to Christ's heart-

2.- Importance of our mission

The growth and development of the community entrusted to us will essentially depend of our generous effort and readiness to serve the life of others.



**"As the Father sent me,
so am I sending you."**

Jh 20,21.

-Shepherds according to Christ's heart-

2.- Importance of our mission

“ God acts and governs the world through ‘secondary causes’ “, that does mean through the cooperation of created persons, things and forces of nature with genuine freedom and dignity.

• This principal that puts into sharp focus the importance of respecting and defending the role of secondary causes in God's plan was always a norm for Fr.Kentenich.

-Shepherds according to Christ's heart-

2.- Importance of our mission

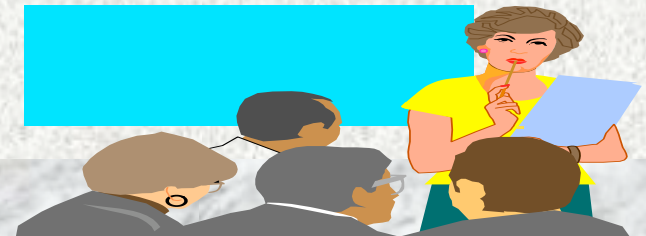
The life of the Church and society are radically conditioned by the way of practising authority in the world.

The family life depends on the parents; the country depends on the people in power; the parish life depends on the parish priest and lay leaders, etc.

-Shepherds according to Christ's heart-

2.- Importance of our Mission

- Fr. Kentenich embodied a new kind of authority and he calls us to embody it too.
- We will not have a renewed Church nor a new social order unless we foster a new ethic and practice of authority
- It is necessary to awaken "educated educators"



-Shepherds according to Christ's heart-

2.- Importance of our Mission

“The Schoenstatt leaders are called and sent by God. They are profoundly imbued with their divine mission; in addition to that vocation, they possess the necessary divine strength; and feeling impelled by it, they have the courage and longing to be crucified because of the mission and task entrusted to them ”



June 2009

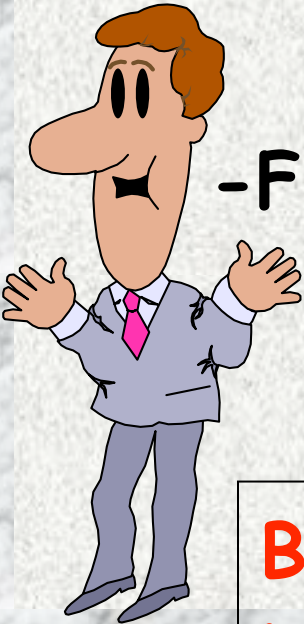
-Shepherds according to Christ's heart-

3.- Distortions of the image of the Schoenstatt leader

a) The Ideologist

- To have too many and big ideas doesn't help to be a fruitful leader.

-First of all we have to embody the truth that we want announce .



June 2009

Before we start to say something, we have first to listen

-Shepherds according to Christ's heart-

3.- Distortions of the image of the Schoenstatt leader

b) The Organizer

- In the service of leadership the danger of activism is always at hand. The high cost of activism is: mediocre care of life, neglecting of relationship with others, deficient prayer and inner life.

Leaders try that to see to it that new ideas emerge from the people entrusted to them. They try to promote and encourage them and let them to clearly define their aim and put it into practice.

-Shepherds according to Christ's heart-

3.- Distortions of the image of the Schoenstatt leader

c) The bossy chief

To be bossy is a real illness in many leaders.
True leaders don't look after themselves.



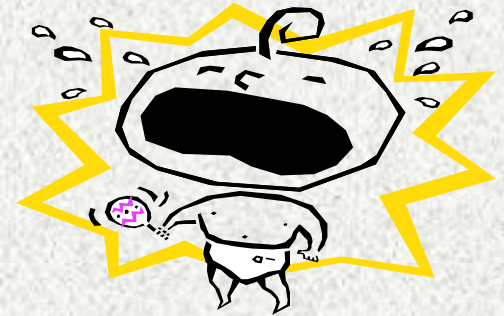
The bossy chief doesn't coordinate his efforts
with other people, groups or teams.

-Shepherds according to Christ's heart-

3.- Distortions of the Schoenstatt Leader

d) The little Dictator

Authoritative or commanding behavior and paternalism are a contradiction to the Gospel to be a serving Church. They have to disappear from our Schoenstatt leadership.



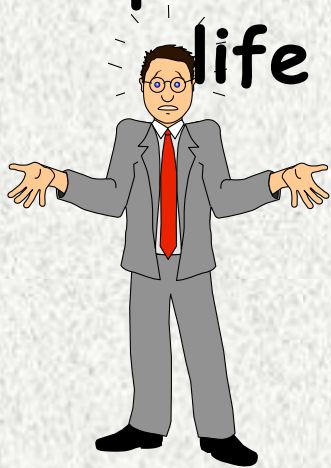
The autocrat is not interested in the thinking and ideas of others. He is convinced that he knows everything better and he believe that his way is the best.

-Shepherds according to Christ's heart-

3.- Distortions of the image of the Schoenstatt leader

e) The democratizing boss

The democratizing boss does not have the consciousness that he is called to be a personal reference for others and source of life for the community entrusted to him.



He is not able to generate unity but provokes uncertainty and lack of assurance

-Shepherds according to Christ's heart-

3.- Distortions of the image of the Schoenstatt leader

f) The anaemic leader

Only the one who has abundant inner life can generate life in others. From this point of view we understand the importance of having educated educators, of having leaders with inner fire that lights the fire of the people around him.

The anaemic leader not only doesn't like to have authority, in fact he doesn't have it at all. He lacks self confidence and doesn't trust God.

-Shepherds according to Christ's heart-

4. The image of the Schoenstatt leader

4.1. The Good Shepherd: the fullness of the ideal for every leader.

“The true leader has to look towards to one who really is his incarnate ideal of leadership: Christ, the Good Shepherd”



June 2009

-Shepherds according to Christ's heart-

4. The true image of the Schoenstatt leader

Who ever receives some responsibility for the community that in some way put him ahead of the people entrusted to him, has to contemplate the one who is the head: Christ Jesus, the Lord.

Every leadership depend on him and is nourished by him.

Jesus is the very prototype of our Schoenstatt leadership



-Shepherds according to Christ's heart-

The image of the Schoenstatt leader

4.2 Characteristic of the Good Shepherd in general

4.2.1 I am the good Shepherd

The Lord has a particular mission consciousness

The Schoenstatt leader is an instrument of God with a deep mission consciousness, christian humilility and big faith in victory.

"I am the good shepherd: the good shepherd is one who lays down his life for his sheep" Jh 10,11

-Shepherds according to Christ's heart-

The image of the Schoenstatt leader

4.2 Characteristic of the Good Shepherd in general

4.2.1 I am the good the Shepherd

We must have a profound divine mission consciousness

Like the Father sent out Jesus, his Son, to the world in the same way he send out us to the people of our time.

We are instruments in the Lord's hand. I am not the who has to educate others; the main educator is Christ Jesus himself. Only if I am inspired and carried by His light and power will I be able to achieve my task as leader.

-Shepherds according to Christ's heart-

The image of the Schoenstatt leader

4.2 Characteristic of the Good Shepherd in general

4.2.2 I am the Good Shepherd

The leaders don't look towards themselves. Instead they eagerly search for the good in others and generously try to give the best of themselves to the people entrusted to them.

When Jesus says "I am the good Shepherd" he is telling us that he is prepared to lay down his life for us, his sheep. Please read **Jn 10**

-Shepherds according to Christ's heart-

The image of the Schoenstatt leader

4.3 Characteristic of the Good Shepherd in particular

4.3.1 Shepherd's Love

To know each person and shelter them in our hearts

-Shepherds according to Christ's heart-

The image of the Schoenstatt leader

4.3 Characteristic of the Good Shepherd in particular

4.3.1 Shepherd's Love

To know each person and shelter them in our hearts

Personal

A Shepherd's love knows everyone, listens to everyone, responds to every request and serves others without reserve.

-Shepherds according to Christ's heart-

The image of the Schoenstatt leader

4.3 Characteristic of the Good Shepherd in particular

4.3.1 Shepherd's Love

To know each person and shelter them in our hearts

Personal

A Shepherd's love knows everyone, listens to everyone, responds to every request and serves others without reserve.

Respectful

A Shepherd's love values deeply the entrusted people and make a big effort to incarnate the ideals proposed to the followers. It is a Love that knows when to be dispensable.

-Shepherds according to Christ's heart-

The image of the Schoenstatt leader

4.3 Characteristic of the Good Shepherd in particular

4.3.1 Shepherd's Love

To know each person and shelter them in our hearts

Personal

A Shepherd's love knows everyone, listens to everyone, responds to every request and serves others without reserve.

Respectful

A Shepherd's love values deeply the entrusted people and make a big effort to incarnate the ideals proposed to the followers. It is a Love that knows when to be dispensable.

Trusting

A Shepherd's love believes in the goodness of others and trusts confidently in the divine personal vocation of everyone.

-Shepherds according to Christ's heart-

The image of the Schoenstatt leader

4.3 Characteristics of the Good Shepherd in particular

4.3.2 Shepherd's Faithfulness

True fidelity is the mature perpetuation of the first love.

-Shepherds according to Christ's heart-

The image of the Schoenstatt leader

4.3 Characteristics of the Good Shepherd in particular

4.3.2 Shepherd's Faithfulness

True fidelity is the mature perpetuation of the first love.

The faithfulness shepherd loves each person completely. God put that person under my responsibility and guidance just as they are.

-Shepherds according to Christ's heart-

The image of the Schoenstatt leader

4.3 Characteristics of the Good Shepherd in particular

4.3.2 Shepherd's Faithfulness

True fidelity is the mature perpetuation of the first love.

The faithfulness shepherd loves each person completely. God put that person under my responsibility and guidance just as they are.

As Educator

I am always father and mother to my sheep not only when I carry out some act of education.

Father and Mother always!

-Shepherd according to Christ's heart-

The image of the Schoenstatt leader

4.3 Characteristic of the Good Shepherd in particular

4.3.3 Shepherd's care

Knowing the good and the wrong things of the people entrusted to us we must care that our "positive leaders" be fruitful yeast in the community as a whole and be able to pass onto the "negative leaders" in an enthusiastic way, values which build up.